

ÉCOLE R.W. BOBBY BEND SCHOOL

# COUNT:DOWN TO KINDERGARTEN

2025-2026  
INFORMATION  
GUIDE

CURIOSITY  
CREATIVITY  
POSSIBILT



# TABLE OF CONTENTS

- STAFF
- SCHOOL SCHEDULE AND PROCEDURES
- BALANCED SCHOOL DAY
- CALENDARS
- MAP
- OTHER IMPORTANT INFORMATION
- FOOTWEAR
- HANDBOOK
- SCHOOL SUPPORTS
- HEARING AND VISION SCREENING
- STUDENT SERVICES TEAM
- PREPARING YOUR CHILD FOR KINDERGARTEN
- WEBSITE
- PAC



# STAFF YOU NEED TO KNOW

PATRICIA WILLIAMSON-CROCKATT...PRINCIPAL

CELINE DOLL ...VICE PRINCIPAL

JOLIE TONNER...ADMIN ASSISTANT

WENDY CARRIERE...ADMIN ASSISTANT

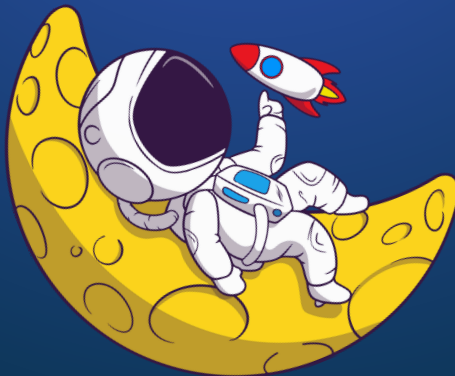
STUDENT SERVICES TEAM

## 2025-26 KINDERGARTEN TEACHERS

RANDI FINDLAY - ENGLISH KINDERGARTEN

LARISSA HARRISON - ENGLISH KINDERGARTEN

JODI DAVIS - FRENCH IMMERSION KINDERGARTEN





# KINDERGARTEN SCHEDULE

- The Kindergarten Program will be held on alternate days.
- Inservice days and holidays do not count as days of the 6 Day Cycle. The cycle resumes following these non-school days.
- If there is a storm day on your day, it counts as your regular day. The 6 Day calendar continues uninterrupted.
- We try to celebrate all holidays and special days (Halloween, Valentine's Day, etc.) for each class.
- Depending on your scheduled day, your child's class may miss a special event. This involves things like external performers, guests coming into the building to do presentations as well as PAC Events like Hot Lunch. We look to balance the number of "missed events" between classes.



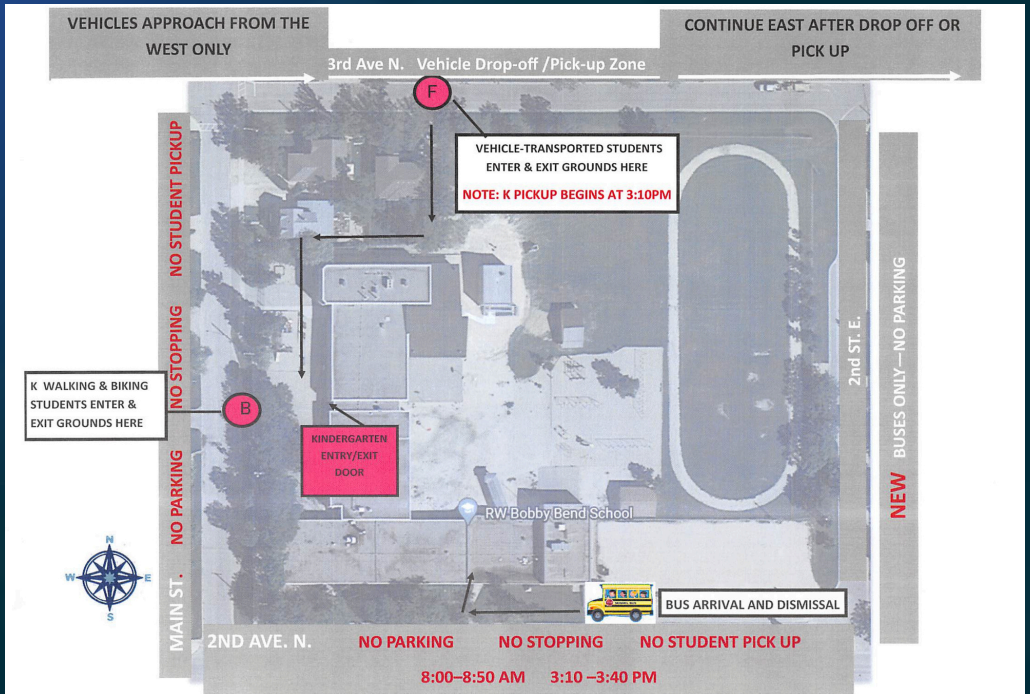
# BALANCED SCHOOL DAY

RWBB follows a Balanced School Day Schedule. This means our day is divided into three “blocks” of learning time of approximately 100 minutes each. After the first and second block, students have both an activity and a nutrition break. Students require food for both breaks, with the morning nutrition break being a light snack, and the afternoon break more of a traditional lunch.

Currently, the exact time schedule for our school , including bell schedules for morning entry, afternoon bus and town dismissal, and both nutrition and activity breaks, is under review. This information will be sent to parents prior to the beginning of the 2025-26 school year.



# ENTRY/EXIT DROP OFF/PICK UP MAP



# MORNING PROCEDURES

- Those who walk to school: Enter into Gate B
- Those who are dropped off by a vehicle: Drop off at Gate F ONLY.
- Bus Riders will exit in the bus loop and enter at the east doors.
- Additional staff will be on duty to accept, direct and supervise students, beginning at 8:30 am. No student supervision will be provided prior to 8:30 am.

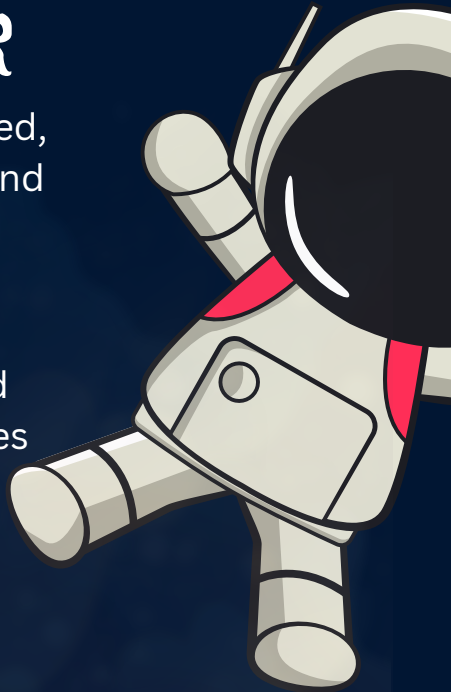
# DISMISSAL PROCEDURES

- The End of Day Dismissal has been designed to address the safe and efficient boarding of buses, vehicle pick up, and those who walk to school.
- Kindergarten Entry/Exit and Vehicle Drop Off/Pick Up maps can be found in your package and on our school website.



# FOOTWEAR

- Two pairs of shoes are required, one pair to be worn outside and the other for indoor use only (non-marking-white soled)
- Kindergarten students should have Velcro closures. No laces that need to be tied, please



## INFORMATION FOUND IN THE SCHOOL HANDBOOK

- Where to Park
- Bus Transportation
- What to do when your child will be absent from school
- What to do when your child's end of day plan changes
- What to do if your child must have medicine at school
- When you should keep your child at home
- RWBB School Handbook can be found on our website at [erwbb.interlakesd.ca](http://erwbb.interlakesd.ca)

# SCHOOL SUPPORTS

- The I.S.D. provides hearing screening in September.
- It is recommended that you take your child for vision screening prior to Kindergarten and annually after that. This service is free.



## STUDENT SERVICES TEAM (SST)

- Includes Learning Support Teachers, School Counsellors and Administrators
- Please let us know if:
  - Your child has been open to any clinical services: physiotherapy, speech, occupational therapy
  - Your child has had an assessment done with the Child Development Clinic
- This will help put supports in place in advance and inform our Student Services Team.

# PREPARING YOUR CHILD FOR KINDERGARTEN

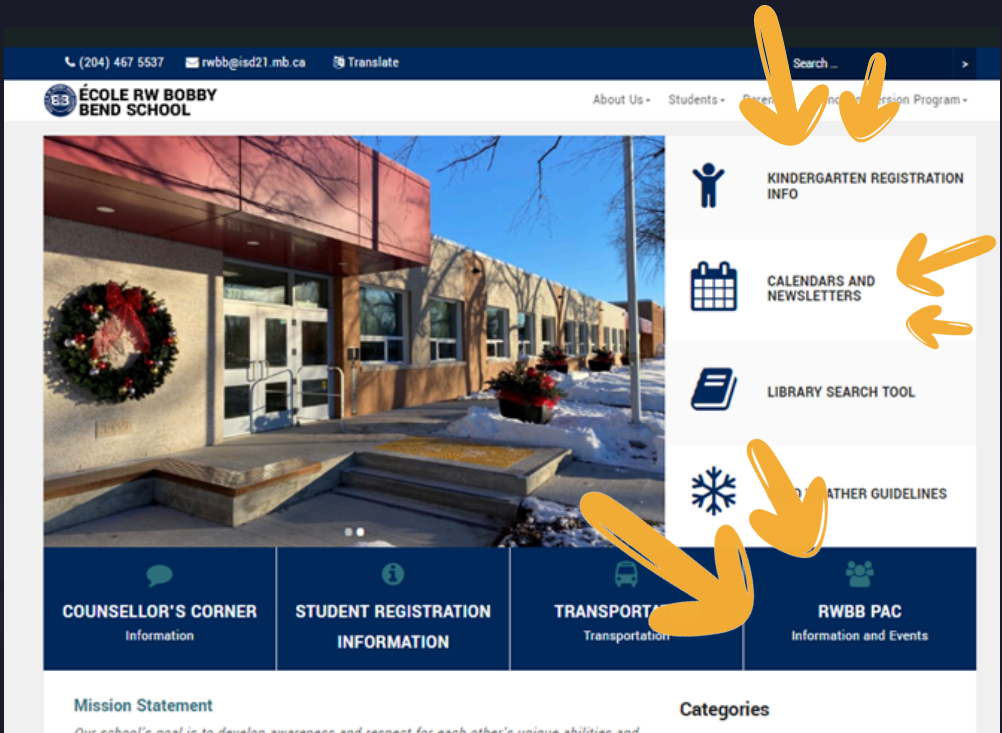


- Read daily to your child. Have your child hold the book and flip the pages while you read.
- Practice letters and numbers through games and puzzles.
- Have your child practice printing their name.
- Have your child colour and print using markers, crayons and pencils regularly.
- Practice cutting paper with scissors.
- Sing songs and read rhyming books daily.
- Practice sharing and cleaning up.
- Have your child practice dressing independently.
- Help your child become independent in the washroom.
- Limit screen time.

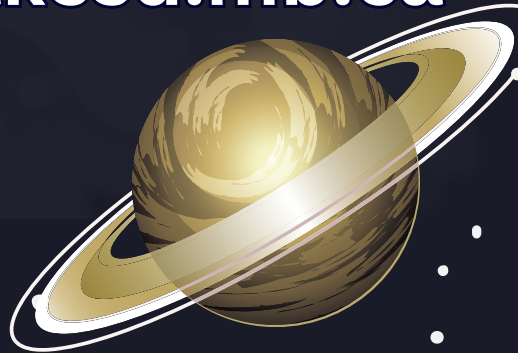


# SCHOOL WEBSITE

You can find everything you need at:



[erwbb.interlakesd.mb.ca](http://erwbb.interlakesd.mb.ca)



# ON OUR WEBSITE YOU WILL FIND UNDER:



## KINDERGARTEN INFO

- Registering your Kindergarten Student and all the forms
- French Immersion Parent Information
- Things to Review Before your Kindergarten Interview in September
- School Anxiety Video
- Classroom Assignment by Student Number

## RWBB PAC INFO

- PAC Executive
- PAC Meeting Information
- Fundraising Events

# IN YOUR KINDERGARTEN PACKAGE:

- School Handbook Cohort Entry/Exit Drop Off/Pick Up Map
- Supply List
- URIS Forms
- Parent Advisory Council Information
- Developmental Milestones Sheets
- School Volunteer Package
- Hello Kindergarten Sheet which contains your child's Student Number. Class Assignments will be posted on our website using **student numbers only**. Access to this information will be available after May 31, 2025.

**CERTAIN ITEMS FOR  
REGISTRATION ARE MANDATORY  
TO START SCHOOL**

**Please refer to your  
HELLO KINDERGARTEN  
LETTER  
for any missing items.**

Please bring these items with you to  
your September Kindergarten  
Interview





Dear Parents/Guardians:

Kindergarten is an exciting and important milestone for both you and your child. Below is some information to help guide you through the first couple of weeks at École RW Bobby Bend School.

Student Name

Your child's temporary Student Number is:  
123456

Our class lists, your child's first day of school, date and time of you and your child's "Get to Know You" Interview with your teacher will be posted on our webpage, [erwbb.interlakesd.ca](http://erwbb.interlakesd.ca), by the end of May.

Only your child's temporary student number will be posted on the webpage. So please keep this number handy.

As well, please bring the "Help Us Get to Know Your Kiddo" Questionnaire with you to your September Interview.

Listed below is any missing information required for registration.

- |   |  |
|---|--|
| <input type="checkbox"/> Proof of Age (ie: birth certificate, passport) | <input type="checkbox"/> Proof of Physical Address (ie: hydro bill, property tax bill) |
| <input type="checkbox"/> Early Experiences Questionnaire                | <input type="checkbox"/> Student Development and Skills Questionnaire                  |
| <input type="checkbox"/> All Items have been received                   |  |

Please email any indicated document(s), to our school email, [rwbb@isd21.mb.ca](mailto:rwbb@isd21.mb.ca), or drop them off at the school between the hours of 8:00 am – 4:00 pm. The above questionnaires can be found on our webpage, [erwbb.interlakesd.ca](http://erwbb.interlakesd.ca).

If you have any questions or concerns, please feel free to call the School Office at 204-467-5537.

If mandatory  
registration  
documents are not  
received, your child  
will not be  
considered  
registered for  
Kindergarten

